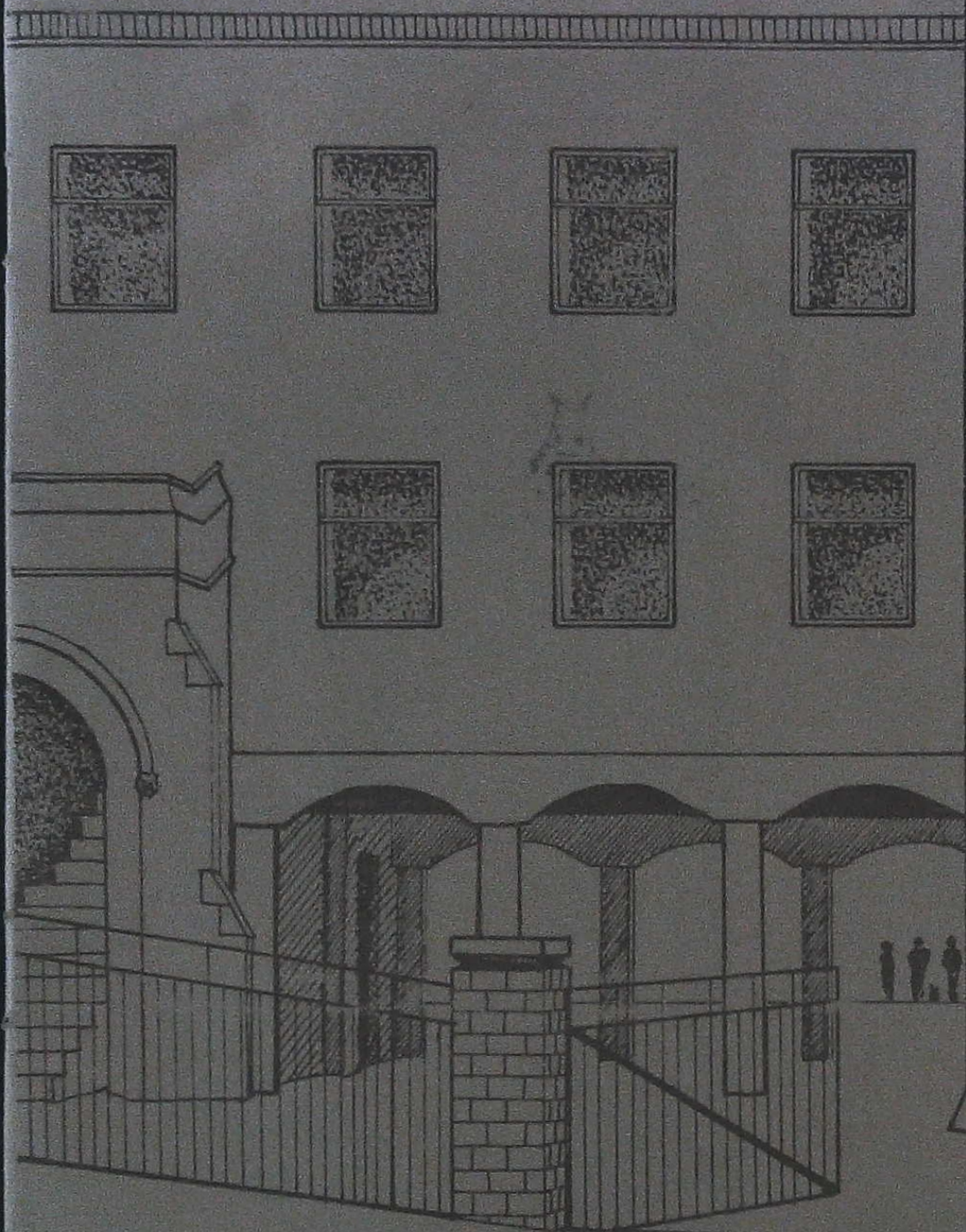


COLLYER'S SIXTH
COLLEGE

L Green 57B
FORM



A WAY AHEAD.....



COLLYER'S SIXTH FORM COLLEGE

HORSHAM

PRINCIPAL

E.D. SLYNN, M.A. (Oxon.)

In 1532, under the terms of his will, Richard Collyer, a native of Horsham and a prominent member of the Mercers' Company in the City of London, established a Grammar School in Horsham. This was a Free Grammar School for the education of sixty local boys of humble means. Its government was shared by the Parish of Horsham and the Mercers' Company. Between 1540 and 1890 the School stood on the site near the Parish Church subsequently occupied by Chesworth School. In 1890 a new Board of Governors was established which sold the old site and rebuilt the School in Hurst Road.

Under the 1944 Education Act Collyer's was accorded Voluntary Aided Status, which it still enjoys. Close links have been maintained with the Mercers' Company, whose crest is now the College badge. In 1963 the buildings were enlarged by the generosity of Dr. W.W. Duckering, an old Collyerian, who left his fortune to the School. Since the decision was taken to establish a Sixth Form College at Collyer's, extensive new building work has been in progress. Much of this work is complete and many new laboratories, classrooms and Common Rooms are now in use.

Collyer's was officially designated a Sixth Form College in September 1976 and has been fully operational as such since September 1980.

WHAT WE OFFER

The Sixth Form College provides full-time education for students of both sexes of sixteen and over. Those who apply for admission are expected to show genuine interest in their studies and a real desire to continue in purposeful education.

Students may be at Collyer's for one, two or three years. We intend to offer students the widest opportunities to develop their personal skills and aptitudes and to pursue, to the highest levels, their academic studies, their sports and other interests. They will receive help in these matters from their personal Tutor, whom they will have met before entering the College. He will follow his students' careers throughout their time at Collyer's, will be pleased to answer queries from parents, and will always be at hand to advise students on personal or academic problems. Students and Tutors meet on a daily basis and the Tutor may supplement the work of the Careers Advisory Staff by helping with applications for jobs, or for admission to University or College, preparing the student for interview and so on.

When they leave Collyer's, either for Higher Education at University, Polytechnic, College of Art, Education or Technology, or to enter employment, we hope the students will feel better prepared to face the demands of the world, that they will have an awareness and understanding of the problems of modern life, of forming relationships with others, of fulfilling their duties and obligations as citizens and members of the community. If this is so, then we will have achieved our true end as educators and will have successfully marked another milestone in the long and distinguished history of Collyer's. With a feeling of pride in our past achievements we now face our future with confidence as we offer to students a stepping-stone, a way ahead, into their future.

WHAT WE EXPECT

We look to students to display a spirit of co-operation, of responsibility and self-discipline and to respond with a mature and sensible approach to the demands made upon them. Their greater maturity as Sixth Form Students should enable them to take a greater share of responsibility for their own welfare and for that of the community than they were ready for at school. They will have more time at their own disposal than they have had hitherto. How they organise it, and the degree of self-discipline they achieve in not wasting it, will largely determine the success or failure of their programme.

Collyer's is a full-time College. On being accepted to membership students will, for their part, be expected to accept certain conditions implicit in that membership. They will be required:

- 1) to be regular and punctual in attendance at daily registration and all classes;
- 2) to pursue their studies conscientiously and to present completed work on time;
- 3) to remain in the buildings or on the grounds during College Hours, except during the lunch hour, when all public houses are out of bounds;
- 4) to refrain from smoking on the College premises and in the immediate vicinity;
- 5) to conform to such standards of dress and behaviour as may be required by the College;
- 6) to accept that failure to fulfil any of these conditions will lead to an initial warning and subsequently to suspension or a request to withdraw from the College.

COURSES OF STUDY

We aim to offer as wide a choice of subjects as possible combined with the greatest flexibility to suit the varying needs and aspirations of students. Typical courses of study may be three subjects at 'A' Level or six at 'O' Level, while it is, of course, possible to combine subjects at both levels.

ADVANCED LEVEL COURSES

These will be followed by students who have successfully completed 'O' Level Courses and will normally last two years. The syllabuses followed are those of the Oxford or London Examining Boards. The following subjects are available.

Art

Art with Art History

Classics:

- i) Ancient History
- ii) Classical Civilisation
- iii) Greek
- iv) Latin

Craft:

- i) Metalwork
- ii) Woodwork

Economics

Engineering Drawing

English Literature

Geography

Geology

History

Home Economics:

- i) Dress & Fabrics
- ii) Food & Nutrition

Mathematics:

- i) Further Mathematics
- ii) Pure Mathematics
- iii) Pure & Mechanics
- iv) Pure & Statistics
- v) S.M.P.

Modern Languages:

- i) French
- ii) German
- iii) Italian
- iv) Russian
- v) Spanish

Music

Religious Studies

Sciences:

- i) Biology
- ii) Chemistry
- iii) Physics

A very varied combination of subjects is possible and most students would study two or three subjects at 'A' Level. Those taking fewer than three subjects will be expected to take additional 'O' Levels or other courses to ensure that they have full and balanced timetables (including twenty-four teaching periods).

ORDINARY LEVEL COURSES

a) One year courses. These courses follow the syllabuses of the Oxford, London and Associated Examining Boards. They are offered for students who wish to retake subjects or convert C.S.E. grades to G.C.E. grades. The following are available, with a wide choice of combinations:

*Art (Drawing & Painting)	History
Biology	*Human Biology
Chemistry	Mathematics
*Commerce	Metalwork
*Economics	*Music
Engineering Drawing	*Needlework & Dress
English Language	Physics
*Food & Nutrition	*Political Studies
French	*Religious Studies
Geography	*Statistics
*Geology	*Textiles - Creative
*Greek Literature in Translation	Embroidery
	Woodwork

*Can be taken as new subjects in one year, subject to certain conditions. We would not expect a student to take more than two new subjects.

Students following a course entirely devoted to 'O' Levels will be expected to take six subjects. After the successful completion of the one-year course students may then embark on the two-year 'A' Level course.

b) Two-year courses. These are intended to supplement 'A' Level courses or may be part of the course of 'O' Level students who hope to stay at Collyer's for more than one year. The following are available and with the exception of Additional Mathematics they may be entirely new subjects:

Additional Mathematics	Metalwork
Engineering Drawing	Music
German	Russian
Greek	Spanish
Italian	Woodwork
Latin	

OTHER COURSES

These may be taken to supplement 'O' and 'A' Level courses.

1) Certificate of Extended Education (C.E.E.)

These courses are designed in particular for students with C.S.E. grades and last one year. They may be taken instead of 'O' Level courses.

English
Geography
Metalwork
Woodwork

Humanities:- English, History,
Religious Studies
Health Science (as part of Human
Biology course)

- 2) Institute of Linguists: French Grade 1 - in this one-year-post-'O' Level course emphasis is laid on the practical use of the spoken and written languages.
- 3) Royal Society of Arts: English - which provides a basic qualification in English Language. This examination is taken by all students entered for 'O' Level English as part of their course.
- 4) Alternative Ordinary Level:- a standard higher than 'O' Level.

Drama and Theatre Arts (2 year course)

- 5) Pottery, Drawing and Painting classes are available at Horsham Art School, by special arrangement, when student's College timetables permit.
- 6) A limited number of subjects may be studied on a non-examination basis, e.g., Engineering Drawing, Metalwork, Woodwork, Dress and Fabric, Type-setting, Hand Printing and Art and Craft as an extension of the General Studies Art and Craft Course.

General Studies

In their first year all students follow General Studies courses. These courses offer students an opportunity to extend their interests beyond the confines of their examination courses. Many topics are available from the fields of Arts and Sciences.

Physical Education and Games

All students take part in some form of physical activity. Throughout the week a large number of periods are timetabled for games and sporting activities, and a very wide range of options is available. There will be opportunities to represent the College in competitive games such as Cricket, Soccer, Rugby, Netball, Hockey, Tennis and Athletics. During the course of the year a large number of inter-House competitions are held.

Voluntary Work

All students are encouraged to take part in some form of voluntary work in the community. They may, for example, offer help in local hospitals and primary schools. Where appropriate, students will be allowed leave from College for such work.

GENERAL INFORMATION

Tutor Groups

Each student is assigned to one of six Houses, and within this House, to a small Tutor Group. The Tutor will normally teach the student one of his or her subjects and deal with daily administrative business. The Tutor will closely follow the student's progress through the College and advise on any problems which may arise. Individual Groups are under the overall guidance of Heads of Houses, who are always available to give advice to members of their Houses.

Careers Advice

The Director of Studies and the College Careers Staff are available to all students to provide information and advice about all areas of employment and Further Education. The College also has close links with the County Careers Service and Careers Officers visit the College.

Maintenance Grants

Education maintenance allowances for students are considered in relation to the income of parents. Details of these and application forms may be obtained from the Area Education Officer.

The College Council

Representatives of the Staff and Students constitute the College Council which discusses various aspects of College life and matters of concern to the whole College. Student members of the Council are elected by their Houses, with a total of four representatives from each House. Within the Council a number of Sub-Committees function, covering a variety of activities, including the organisation of social events.

The College Fund

All students are asked to subscribe to this Fund which is used to subsidise a wide range of activities and acquire items for the benefit of the whole student body. An initial amount of five pounds is payable on entry to the College, which will cover the above items, membership of the Collyerian Association and other incidental expenses. No further contribution will be required during the student's stay at the College.

Attendance

The College day is from 8.55 a.m. to 3.50 p.m. Monday to Thursday and 8.55 a.m. to 3.30 p.m., Friday. Registration is at 8.55 a.m. and 1.45 p.m.

Transport

The West Sussex Education Committee will normally assist with the cost of travel by public transport for students from the three contributory schools in Horsham whose parents live within the designated catchment area for Horsham and whose homes are more than three miles from the College. Applications should be addressed to:-

The Area Education Officer,
Beckworth House,
Black Hill,
Lindfield,
Haywards Heath,
Sussex.

Other applicants who live three or more miles from the College may write to the Area Education Officer who will consider requests for assistance. In order to receive assistance with travelling expenses applicants will need to supply evidence that an appropriate course cannot be obtained at a nearer establishment.

Printed by

The Resources Centre

at Collyer's VI Form College