



# COLLYER'S

Founded in 1532



Prospectus 2024



03	Welcome to Collyer's
05	Five reasons to choose Collyer's
07	Heritage
08	Pastoral guidance
10	Our facilities
13	Collyer's 360°
19	College Sport Academy
21	Choosing your study programme
25	Course index
26	Our courses
40	How to apply
42	Preparing for life after Collyer's
43	Degree outcomes after Collyer's

# Contents







# Welcome to Collyer's



I am delighted you are considering Collyer's as your chosen place of study for the next important phase of your education.

Collyer's is one of the leading sixth form colleges in the country and the first choice for A Levels across the whole of West Sussex. Founded nearly 500 years ago in 1532 by a London merchant and Mercer named Richard Collyer, we have a strong sense of history, a welcoming college community and a clear aspirational culture. We consistently achieve amongst the very top A Level results for state providers in the county.

As sixth form specialists we offer a wide range of study programmes including A Levels, vocational and technical as well as a transition year option. Innovative teaching matched with outstanding support and guidance allows our learners to develop their independent outlook, achieve their potential and ready themselves for the next stage of their life – 9 in 10 students who go on to university achieve a 1st or a 2:1 degree.

Throughout this prospectus you can also find out about other aspects of our provision which make Collyer's the exceptional college it is: excellent learning and pastoral support, enrichment activities including sport, music and drama and the opportunity and encouragement to develop personally as well as academically.

As a Collyerian you will join an international college, with an outstanding national reputation, founded in the local community.

I hope you are able to visit us at Collyer's at one of our Open Evenings and I look forward to welcoming you in person.

*D. Lodge*

**Dan Lodge**  
Principal





# Natalia



Studying German,  
Chemistry, Maths

“Collyer’s is very  
supportive and I  
know I can always  
go to my teachers  
for help.”





# Five reasons to choose Collyer's



1.

## Excellent Results

Collyer's is the first choice for A Levels in West Sussex. 71% of our students' A Level grades are A\* - B and 87% of students going to university gain a place at their first choice institution.\*

2.

## Excellent Futures

90% of Collyer's students who go on to university achieve a 1st or 2:1. This places Collyer's significantly ahead of the state sector average, and also ahead of the independent sector average. At Russell Group universities, 41% of our students achieve a 1st class degree – higher than both state and independent schools.

3.

## Excellent Support

Our students benefit from excellent pastoral guidance from their personal tutor and Head of House, as well as our Student Services and Student Support teams. Our Progression directorate provides comprehensive advice and guidance for every student across Higher Education, Oxbridge, or Careers, including bespoke events such as our busy Next Steps Careers Fair.

4.

## Excellent Choice

As a sixth form college, Collyer's can offer a huge variety of courses across A Levels, BTECs and T Levels. In the 2023/24 academic year we will offer more than 50 courses, and with Collyer's 360, students can supplement their studies with a wide variety of extracurricular activities, some of which are listed within this prospectus.

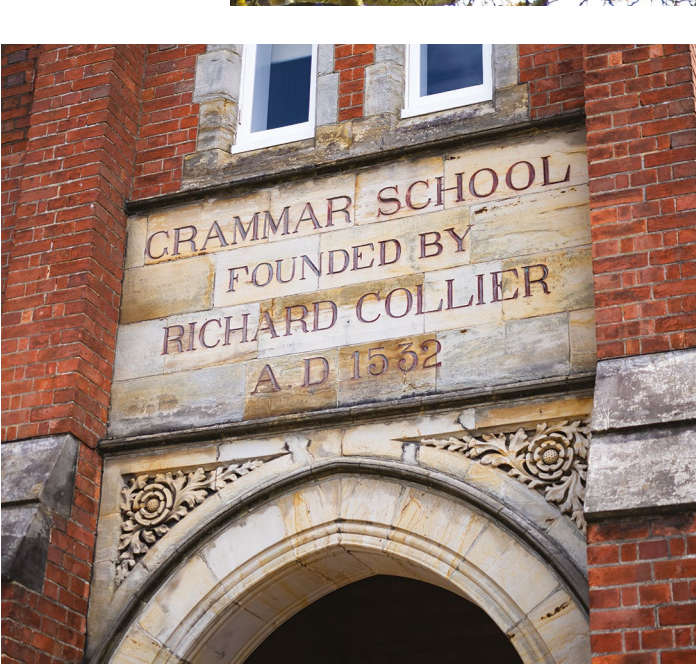
5.

## Excellent Facilities

Collyer's is an attractive campus college with excellent facilities to support our students across their learning and extracurricular activities. For the 2023/24 academic year we will open our new Shelley Building and the college has exciting plans for further developments. Please visit us at one of our Open Evenings and see for yourself.

\*Statistics from the Higher Education Statistics Agency (HESA)









# Heritage

Collyer's has a long and fascinating history in Horsham that is integral to the fabric of our community.

We were founded in 1532 during the reign of King Henry VIII in the will of London Mercer and Merchant Richard Collyer "... to keep a Free Scole in Horsham in the Countie of Sussex where I was borne". Richard Collyer became Third Warden of The Mercers' Company in 1528, five years before his death in 1533.

The original Tudor school was built next to St Mary's Church at the heart of the town, with 60 pupils all in one large classroom taught entirely in Latin. Our first master – Richard Brokebanke – was appointed in 1541 following Apposition led by Richard Jones, then High Master of St Paul's School, a fellow Mercers' School.

Over the last five centuries Collyer's has prospered and benefitted greatly from the support and guidance of The Mercers' Company. In the mid 1500s we survived the Dissolution of the Chantries. During the 17th and 18th centuries the school grew and was refurbished before being completely rebuilt in 1840 at the original site, and then moving in 1893 into the 'new' grammar school building on Hurst Road that it currently occupies.

In 1976 the grammar school converted to become a mixed sixth-form college and is now one of the leading sixth-form colleges in the country with over 2,000 students. Over the coming years we look forward to celebrating two key milestones:

2026 50th anniversary of conversion to a sixth-form college

2032 500th anniversary of foundation by Richard Collyer





# Pastoral guidance

Personal tutors and Heads of House provide guidance, monitoring and support through each stage of the sixth form journey, for every student.

Tutors act as a first point of contact for any concerns or queries about progress or wellbeing at college, for students and parents. The tutorial programme, delivered weekly, helps students to settle into college, develop independent learning skills and supports students in making decisions about the future.

Regular one-to-one meetings allow tutors to provide individual advice and to set targets when needed to help a student achieve their potential.

More specialist support is available when required from other teams such as Student Services, Student Support, and Careers.

Personal tutors play a key role in identifying students' needs and ensuring the right support is in place.

Supporting your studies







Studying Law, Philosophy,  
Politics

“The college offers  
a great balance  
between a warm  
environment and  
a hardworking,  
professional  
approach.”

Finn





# Our facilities

## Inspiring spaces

The teaching facilities at Collyer's are excellent. From the main 19th Century building that borders Hurst Road, to the modern Graham Baird Building for Economics and Business, and the innovative DigiHub in the heart of our campus, all our buildings offer a spacious and inspiring place to learn. For the 2023/24 academic year we are excited to open our new Shelley Building.

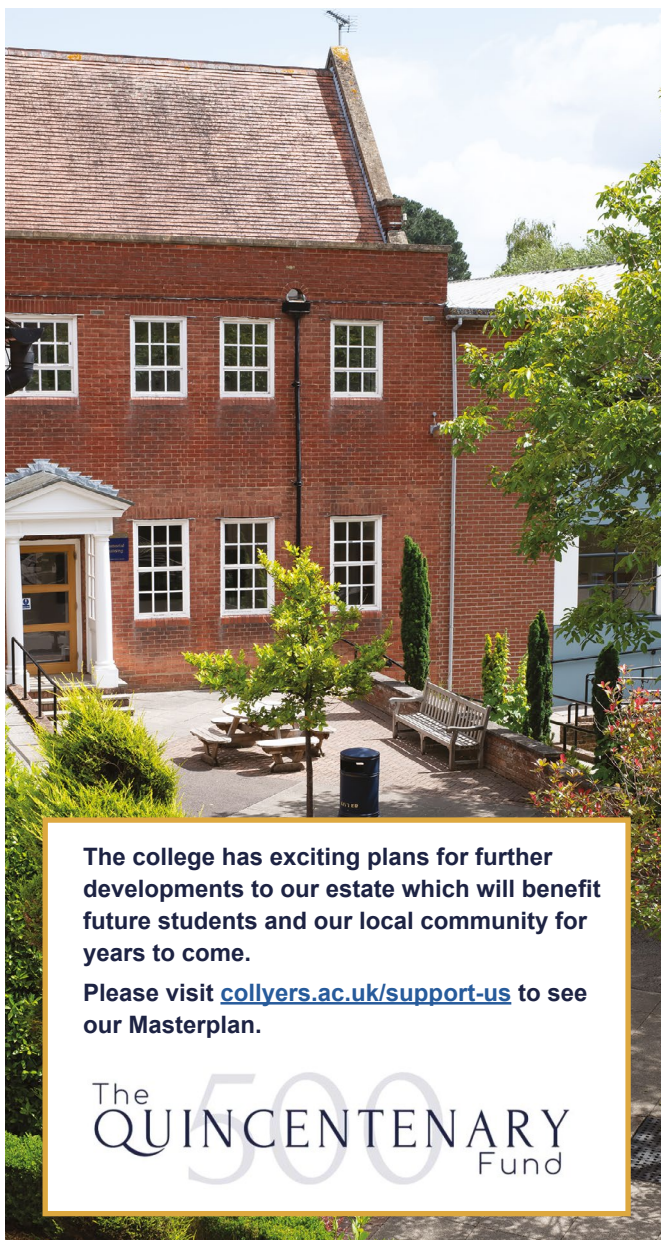
## Creative hubs

Collyer's has a strong offering of creative subject areas, from Contemporary Fine Art to Photography and Media Studies. A range of fantastic creative learning spaces such as our art rooms and our digital mixing suite serve these subject areas.

## An outstanding library

Students at Collyer's can take advantage of our fantastic three-storey library. Open every day from 8am until 6:00pm (5pm on Fridays), our staff work closely with students to ensure the collection reflects their needs and the needs of the curriculum. The library provides students with access to networked PCs, wireless internet, laptops, and has photocopying, printing and scanning facilities as well as offering plenty of quiet study space.





The college has exciting plans for further developments to our estate which will benefit future students and our local community for years to come.

Please visit [collyers.ac.uk/support-us](https://collyers.ac.uk/support-us) to see our Masterplan.

The  
QUINCENTENARY  
Fund

## Superb sporting facilities

Collyer's has excellent sporting provision and to support this we have an array of versatile facilities. The playing fields are home to two football pitches, a rugby pitch, five-a-side football and volleyball space. The floodlit courts are mainly used for netball and tennis while the Sports Centre caters for a variety of indoor sports including basketball and badminton.

## A green and pleasant campus

Most of the College buildings are situated around a central quad with trees, sections of lawn and park benches. This helps to create a peaceful and attractive area at the heart of the College. Students benefit from a number of social areas on campus, including our new café, and have access to our mindfulness garden.

## Performance spaces

All students have the opportunity to take part in performance work at Collyer's. To support this and specialised subject areas such as Music and Dance, the College has individual studies and a large performance area in the Duckering Hall with a sprung floor, lighting and wireless sound system.





Jennifer

Studying Biology,  
Chemistry, Physics

"The move to  
Collyer's was a  
massive jump since  
I came from another  
country, but the  
college has made it  
easy for me."



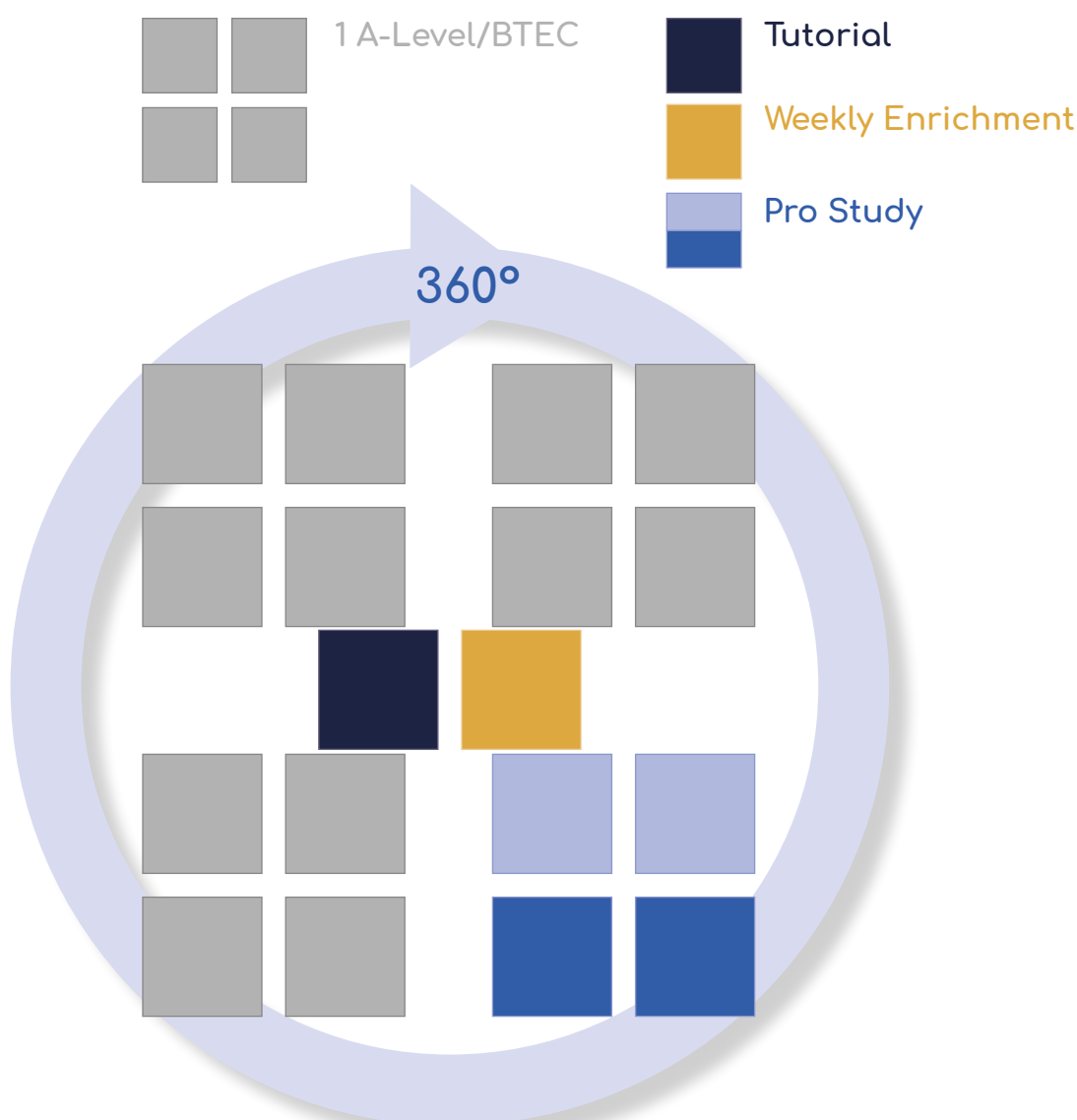


# Collyer's 360°

Collyer's provides a fully rounded sixth form experience, designed to equip students with the qualifications, personal qualities, and skills they will need to embrace future challenges and achieve their potential. Our approach supports students in developing independence and their ability to manage responsibilities as a young adult, to make a positive contribution to the communities in which they live and work.

All Collyer's students spend at least three timetable blocks on their chosen subject(s). Tutorial, Pro-Study and Weekly Enrichment are allocated around subject blocks. Any remaining timetable sessions are available for independent study and small group/individual support. Across the academic year, students will also participate in a range of personal development activities including progression events, guest lectures, workshops, work experience, and trips.

## Typical study programme







# 360° – key components

## Tutorial

All students attend a weekly tutorial session as part of their programme of study. Tutors provide guidance and support through each stage of the sixth form journey and are a student's first point of contact with any concerns or queries about their studies, progress, or wellbeing at college. Tutors also monitor a student's overall attendance and progress in their studies and supports their development as an independent learner.

## Weekly Enrichment

Enrichment is an essential part of the sixth form experience. All students are expected to engage, each week, in an enrichment activity. There are a huge range of activities to choose from including cross-college options such as sport, DofE, and performing arts; subject extension activities to develop skills beyond the curriculum; short courses to enhance wellbeing and future progression; and student-led clubs and societies. We host an Enrichment Fair at Welcome Day and the start of term so that students can find out about the different activities on offer.

## Pro-Study

Pro-Study is about exploring additional subject content to develop understanding and skills beyond the regular homework set following classes. Students have four 65-minute periods of Pro-Study per week, two of which are registered and supervised in one of the college's library spaces. Pro-Study plays an important role in helping students to manage their time well and develop the independent study skills they will need to be successful in their qualifications.

## Personal Development Activities

In addition to weekly enrichment, the college provides wide-ranging personal development opportunities for students, including guest lectures and workshops, work experience, subject links with employers and higher education providers, and regular Progression Events such as careers fairs and HE talks. Collyer's also has a long tradition of providing an exciting variety of trips and visits to inspire curiosity and bring the curriculum to life. In 2023-24 the opportunity to study American politics in Washington, undertake fieldwork in Iceland or gain insights into the travel industry in Dubai, were just some of the options available.

360°



# 360° - how it works



## Aims

Our 360° programme at Collyer's is designed to:

- enhance FUTURE progression opportunities
- enrich physical and mental HEALTH
- develop COMMUNITY connections
- encourage students to EXPLORE their interests

Students will be able to access a record of their participation in activities and events during their time at college, via MyProgress, our bespoke student data platform. This will help them to reflect on the knowledge, skills and qualities they have developed, when planning their future beyond sixth form.

Future

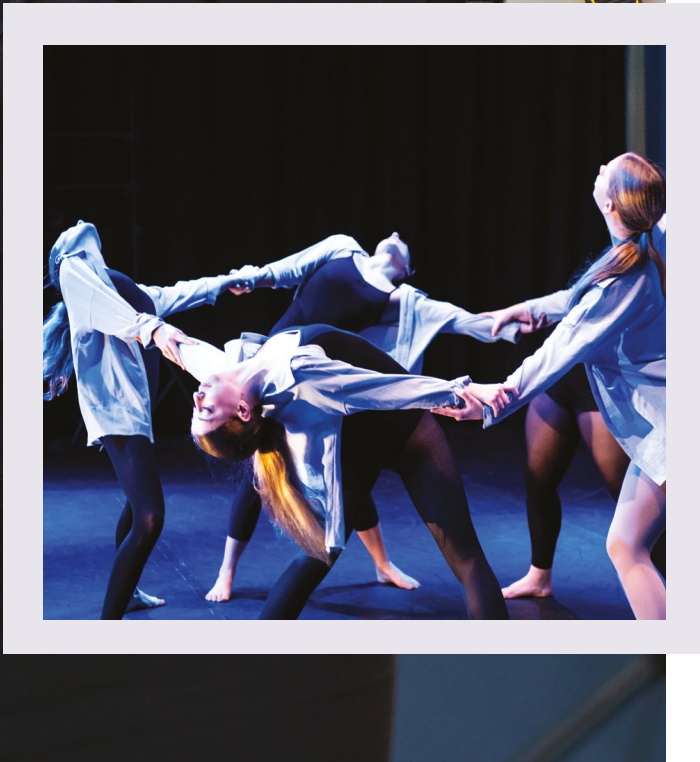
Health

Community

Explore

## 360° Award

Students will receive credits for participation in enrichment activities, taking leadership responsibilities, and contributing to the college and wider community. Building credits will lead to achievement of the Collyer's 360° Award, either Bronze, Silver or Gold, according to the number of credits a student has accumulated.





# Weekly enrichment

## Creative and Performing Arts

- Crafting Club
- Creative Writing
- Crochet Club
- Dance - Rambert Grades (Contemporary Dance)
- Dance Society
- Drama Competition
- LAMDA
- Live Sound Engineering
- Music Production and Studio Recording
- Music - Big Band
- Music - Chamber Music Ensembles
- Music - Choir
- Music - Orchestra
- Music - Sinfonia
- Performing Arts - Variety Show
- Stage and Theatre Lighting Tech



## Sport and Exercise

- 5k Running Club (Recreational)
- Badminton (Recreational)
- Basketball Academy Men's (Competitive)
- Basketball Women's (Competitive)
- Football Men's: 5-a-side (Recreational)
- Football Men's (Competitive)
- Football Women's: 5-a-side (Recreational)
- Football Women's (Competitive)
- Hockey Mixed (Competitive)
- Netball Women's (Competitive)
- Pilates (Recreational)
- Table Tennis (Recreational)
- Talented Athlete Scholarship Scheme
- Tennis (Recreational)
- Volleyball (Recreational)

360°







## Skills and Social

- Bicycle Repair Club
- Book Club
- Brand Identity and Visual Marketing
- CAD/3D Modelling
- Carbon Literacy Course
- Chess Club
- Christian Union
- Coding for Fun
- Collyer's Heritage Project
- Counselling Skills
- Creative Writing
- Cyber Centurions
- Debating Society
- Duke of Edinburgh Gold Award
- Dungeons and Dragons Club
- Ethical Issues in Science
- Equality and Diversity Committee
- Feminist Society
- Film Club
- First Aid
- French Tarot
- Games Club
- Hand Sewing Club
- Heritage Society
- International Social Hub
- Investor Challenge
- Latin Language for Beginners
- LGBTQ+ Society
- Makaton Signing
- Medical Debate Society
- Oxbridge Programme
- Photoshop – Creative Techniques
- RCU - Student Union Leadership
- Robotics Club
- Scale Model Making Club
- Self Defence
- Socialist Society
- Sociology Film Club
- Spanish Film Club
- Study Skills
- Trans Society
- Vets and Medics Programme
- Young Enterprise Scheme

## Wellbeing

- Academic Anxiety Course
- .b Mindfulness Course
- .b Extension Course
- Connections
- Morning Meditation
- Social Anxiety Course
- Social Hub
- Wellbeing MOT



# Weekly enrichment

## Subject Enrichment

- Art – Portfolio Preparation
- Biology – Olympiad Preparation
- Biology – Student Lectures
- Chemistry – Aspirin Synthesis Project
- Chemistry – Beyond the Curriculum
- Chemistry – Undergraduate Chemistry
- Computer Science – Bebras Computing Challenge
- Computer Science – Informatics Olympiad
- Dance – New Ground Dance Company
- Geography – Geographical Futures
- Geography – Geography Society
- History – UCAS, Careers and Oxbridge
- History – History Book Club
- History – History Society
- Law – Law National Admissions Test (LNAT)
- Maths – Cipher Challenge & Ritangle
- Maths – Senior Maths Challenge
- Maths – STEP (II and III) and AEA for UCAS
- Maths – MAT and TMUA for UCAS
- Maths – Olympiad for Women
- Media – Commissioned Film Projects
- Media – Media Debate Club
- Media – Media Hub
- Photography – Portfolio Preparation
- Physics – Women in Physics Society
- Physics – PAT and AEA for UCAS
- Psychology – HE and Research
- Science – CREST Award
- Sociology – Sociology in the News
- Travel & Tourism – Online Travel Training



360°

*\*List of Enrichment opportunities correct at the time of going to print*





# College Sports Academy

Collyer's provides a unique opportunity, offering students an outstanding education alongside the opportunity to develop their chosen sport.

Our Sports Academy includes Basketball, Netball, Football, Hockey, Rugby, and a number of individual sports. Sports Academy members will be able to access increased coaching hours, links to performance centres, physio support, video analysis, and strength and conditioning programmes. All academies also have strong links with local sports clubs.

In recent years, Collyer's has built a healthy reputation for consistently producing successful teams and athletes, with a number of county and national representative players.



## TASS

In order to develop our sporting offer further, we have recently been recognised as an accredited site for talented athletes through the 'Talented Athlete Scholarship Scheme' TASS, which signposts elite sports men and women to the college. If you are an elite athlete in your chosen sport and wish to apply to become a TASS athlete, please fill in the application form above. If you meet the initial TASS criteria we will then be in touch and send you a TASS specific application form.





Andrea



Studying Applied Science  
(Double), Criminology

"I chose Collyer's  
to gain more  
independence and  
get the opportunity  
to study something I  
really enjoy."



# Choosing your study programme

This section is designed to help with your initial subject choices, which you will add as part of your online application.

All subject choices, and your overall study programme, will be discussed with a member of academic staff at interview. Changes can be made at that point and again at our Welcome Day.

*“Whatever study programme is right for you, teaching, learning and support at Collyer’s will be outstanding”*

## Step 1: Choosing the right type of study for you

Matching your studies to your individual learning style, in addition to your interests and aspirations, is vital for success.

This section will help you to choose the right type of study for you. You will then be able to choose from a range of subjects within one of those study types. This is an exciting point in your journey and Collyer’s is here to help you get to where you want to be.

When thinking about different types of study, try asking yourself the following questions:

- What do I want to progress onto after Collyer’s?
- What type of studying do I prefer – a traditional classroom environment or more practical learning?
- What type of assessment do I do best with – exams or coursework?
- What is my average GCSE score likely to be?

Study Type	Academic	Mixed	Vocational	Technical	Transition
Qualification	A Levels	A Level(s) + single or double BTEC	BTEC(s)	T Level	BTEC (Level 2) + GCSE English and/or GCSE Maths + additional supporting content
Length	2 Years	2 Years	2 Years	2 Years	1 Year
*GCSE average needed for entry	5-9	4-9	4-9	4-9	3-4
Main assessment	Exams	Exams/ Coursework	Exams/ Coursework	Exams/ Coursework/Project	Exams/Coursework
Progression	Degree (University) Higher Level Apprenticeship Employment			Technical Degree (University) Degree Apprenticeship Technical Employment	Mixed, Vocational or Technical programme at Collyer’s

\* From a minimum of 5 GCSEs. Most students will do 8 or more.





## Some further guidance:

### Academic

An entirely A Level route, this suits learners who have achieved well at GCSE and are confident with exams. Most students on these programmes progress onto universities with 90% achieving a 1st or 2:1. Students will normally choose three subjects.

### Mixed or Vocational

Combining A Levels and BTECs or just BTECs, these routes are perfect for learners who prefer to mix coursework and exams and learn in a more practical way. Students will normally choose two or three different subjects or specialise in a preferred area if choosing a BTEC Triple.

### Technical

Collyer's is one of the first colleges nationwide to offer T Levels. These innovative qualifications combine 45 day industry placements with cutting edge study. These qualifications are brilliant for students who have decided on a future career path and want to specialise now. Students will choose one subject as their whole programme of study.

### Transition

Designed for students who have just finished their GCSEs and achieved average grades of 3 to 4. If successfully completed, the Transition programme at Collyer's provides an opportunity for students to progress on to a two year Mixed, Vocational or Technical programme. Students will normally choose a core course (e.g. Business BTEC Level 2) providing a progression route to Level 3 alongside transition content to develop skills and aptitudes for future success.

## Step 2: Choosing your subjects

### You can now make your subject choices.

Most subjects will have specific entry requirements, which can be checked on the subject pages.

When choosing your subjects, try asking yourself the following questions:

- Is the assessment approach for each subject suited to my preferred way of learning?
- Is the subject leading me towards my future progression goals?
- Do I meet the entrance requirements for each subject?
- Is this one of my strong subjects at school or something new I would like to try?



Studying Creative Digital  
Media, Geography,  
Business

"I like that the  
teachers are very  
supportive with  
students and  
help out on every  
occasion."



Studying Contemporary  
Fine Art, Graphic  
Communication, Textile  
Design

"The facilities at  
Collyer's are great  
– I got to try lots of  
things in art that  
I never imagined I  
could do."

Rosie





# Course Index

ACADEMIC		
Subject Name	Qualification	Page
Accountancy	A Level	26
Biology	A Level	26
Business	A Level	26
Chemistry	A Level	26
Computer Science	A Level	27
Contemporary Fine Art	A Level	27
Dance	A Level	27
Design and Technology - Product Design	A Level	27
Drama and Theatre	A Level	27
Economics	A Level	28
Electronics	A Level	28
English Language and Literature	A Level	28
English Literature	A Level	28
Environmental Science	A Level	28
Film Studies	A Level	28
French	A Level	28
Geography	A Level	29
Geology	A Level	29
German	A Level	29
Graphic Communication	A Level	29
History	A Level	29
Law	A Level	30
Mathematics	A Level	30
Mathematics (Further)	A Level	30
Media Studies	A Level	30
Music	A Level	30
Philosophy	A Level	31
Photography	A Level	31
Physical Education	A Level	31
Physics	A Level	31
Politics	A Level	31
Psychology	A Level	32
Sociology	A Level	32
Spanish	A Level	32
Textile Design	A Level	32

VOCATIONAL		
Subject Name	Qualification	Page
Applied Science	BTEC National	33
Art and Design	BTEC National	33
Business	BTEC National	33
Creative Digital Media Production	BTEC National	34
Criminology	Advanced Diploma	34
Engineering	BTEC National	34
Health and Social Care	BTEC National	34
Information Technology	BTEC National	35
Music Practitioners	Extended Diploma	35
Sport	BTEC National	35
Travel and Tourism	BTEC National	35

TECHNICAL		
Subject Name	Qualification	Page
Digital Production, Design and Development	T Level	36
Education and Childcare	T Level	36

TRANSITION		
Subject Name	Qualification	Page
Art and Design	BTEC First	37
Biology	GCSE	37
Business	BTEC First	37
Child Development and Care	Technical Award	37
English	GCSE	37
Health and Social Care	BTEC First	38
Information Technology	BTEC First	38
Mathematics	GCSE	38
Sport	BTEC First	38
Travel and Tourism	BTEC First	38

We reserve the right to make changes to the curriculum or other aspects of our provision at any time. Any such changes will always be reflected on our website.  
Please see [collyers.ac.uk](http://collyers.ac.uk)





# Academic courses

## Accountancy **NEW**

### A Level (AQA)

A Level Accounting covers elements of both Financial Accounting - which is essentially keeping score of how a business is doing, and Management Accounting - which involves using financial information to make decisions on how to improve the business in the future.

Specific topics that you will study are, double entry bookkeeping, the main underlying accounting principles, construction and analysis of final accounts, capital investment appraisal and the implications of ethical issues.

Accounting is a numerate subject. You will use formulae to calculate information from which to make decisions. Writing well is also important as some exam questions require written reports regarding the evidence provided.

Students can progress straight into an accounting training contract with an accounting firm or to university.

### Specific entry requirements

Grade 6 Maths + Grade 4 in English Language

## Biology

### A Level (OCR)

Biology is the study of organisms in terms of the way they function and how they relate to each other and to their environment. A Level Biology deals with a variety of life processes including: cell biology, biochemistry,

evolution and biodiversity, physiology, immunity and disease. Additionally, A Level students build on the first year with more complex study including: neurology, genetics and genetic engineering, ecology and homeostasis together with a detailed study of respiration and photosynthesis. The second year of the A Level will come with a separate practical endorsement. After completing this course students will have gained a valuable insight into many branches of Biology.

### Specific entry requirements

Grade 6 6 in Combined Science + Maths Grade 6  
OR Biology Grade 6 + another science  
Grade 6 + Maths Grade 6

## Business

### A Level (AQA)

This subject covers all aspects of business decision-making and modern business theory. The areas involved range from interpreting company accounts, finance, human resource management, marketing, economics and other external factors such as the legal and ethical background to business activity. Reference to real companies and leaders as well as using a range of quantitative techniques will help you to support your analysis and evaluation of material. IT and communication skills will be developed for presentation of your work but the assessment is based on 100% examination.

### Specific entry requirements

Grade 4 in Maths + Grade 4 in English Language

## Chemistry

### A Level (OCR)

Chemistry is the study of matter at the atomic level, the changes that matter undergoes and the fundamental natural laws that define these changes. Chemistry continues to play a major role in shaping modern life: from the design and synthesis of therapeutic drugs, to the latest hydrogen fuel celled vehicles. So much relies upon the advancements made in the field of chemistry. The A Level course takes students from the fundamentals of formulae writing, writing equations and basic calculations, through to more advanced ideas in organic, physical and inorganic chemistry. Central to the course is the completion of practical work to develop and expand on the theoretical content. Chemistry combines very well with Mathematics and other science subjects, including Biology, and will lead to degree courses in: Chemistry, Biological Sciences, Medicine, Veterinary Science, Dentistry and Pharmacy amongst others.

### Specific entry requirements

Grade 6 6 in Combined Science + Maths Grade 6  
OR Chemistry Grade 6 + another science  
Grade 6 + Maths Grade 6



## Computer Science

### A Level (Eduqas)

This course is designed to appeal to students whose interest in computers goes way beyond the application of ICT. Students will learn to develop algorithms and will implement these using a variety of programming paradigms including procedural, object oriented and functional techniques. Python is the main language used, but other languages will be experienced throughout the course. For Non Examined Assessment (NEA), students will develop and apply their programming skills to develop a computer system for a real end user. At this stage many students choose to teach themselves a new programming language and/or to program for a different hardware platform (e.g. mobile phone applications). As well as devising and coding algorithms, students will study data representation, computer systems, computer architecture, communications, networking and database theory.

The course does require the ability to think logically as well as having the enthusiasm and tenacity to stick with a really tricky problem until it is solved.

Students will be expected to have studied Computer Science but self-taught programmers, who can demonstrate their ability to code at the required level, will also be considered.

Computer Science is a subject that combines very well with Electronics and Maths (A Level Maths is a requirement for most Computer Science degree courses). There are two exams at the end of the second year: on-screen exam (40%) and written paper (40%). Coursework is worth 20% of the overall marks.

#### Specific entry requirements

Grade 6 in Maths + Grade 6 in Computer Science (If no Computer Science GCSE, students must have very good programming skills, which will be assessed, or will be required to complete a short online course over the summer before joining)

## Contemporary Fine Art

### A Level (Eduqas)

The course aims to encourage an adventurous and enquiring approach to the subject within an understanding of past and contemporary fine art practice. Fine Art includes four main disciplines which can become specialist pathways or students can move between specialisms; painting and drawing (traditional, non-traditional and digital), printmaking, sculpture (including installation work), lens-based image making (including animation, film & video). It encourages students to build upon their previous knowledge through experimentation with media, scale and context towards a greater level of artistic maturity and independence. 60% of the overall assessment is attributed to a personal coursework project, including a 1000 - 3000 word essay, and 40% to an examination project.

#### Specific entry requirements

Grade 4 in Art and Design (For exceptions see Head of Art for Portfolio submission)

## Dance

### A Level (AQA)

This course involves studying Dance in both practical and academic contexts. Technical training, predominantly in contemporary dance will focus on developing physical and performance skills. Choreography and repertory performance which are central to the course, are developed in the studio through workshops and rehearsal in preparation for a practical exam. Classroom based analysis of professional works and contextual study of significant companies and choreographers, will inspire practical development and prepare students for an essay based written exam. The course provides an excellent grounding in the practical and academic skills required for degree level study and training in Dance.

#### Specific entry requirements

Grade 4 in English Language

## Design and Technology - Product Design

### A Level (AQA)

Product Design aims to equip learners with design skills for the future. Students will be able to recognize design needs and develop an understanding of how current global issues, including integrating technology, impacts on today's world. In the first year you decide on a project that you will research and develop through sketches CAD/CAM and prototype modelling. In the second year you will produce a high-quality practical outcome related to your chosen project.

The balance between practical coursework (including a practical outcome with a portfolio of evidence), and the theoretical exam content is 50:50. In the exam 15% of the overall grade is applied math's set to a grade 5 standard.

#### Specific entry requirements

Grade 4 in Maths + Grade 4 in English Language + Grade 4 in Product Design (Grade 6 in Maths preferred if no Grade 4 in Product Design)

## Drama and Theatre

### A Level (OCR)

Nationally, Collyer's has a proud history of Drama among sixth-form colleges. For the past twenty years our students have progressed to the best universities and drama schools, with many now working in the theatre community as writers, directors, designers and, of course, actors. This A Level demands creative and communication skills in almost equal measure; and is delivered by a teacher with many years of industry experience. Students will be assessed on their competence in applied practical skills and theoretical understanding.

This course will help you develop your love and understanding of stage craft. It will involve taking part in drama productions, as well as studying plays and watching live theatre. A willingness to rehearse outside of lessons is essential.

#### Specific entry requirements

Grade 4 in English Language



## Economics

### A Level (AQA)

Economics studies the central issue of how societies use scarce resources; who gets what and why. Fundamentally it relates to incentives and choices made. In the first year students are introduced to the important economic model of demand and supply and learn to apply it logically to prices in modern markets. The role of the government in managing the economy is also studied in a national and global context respectively. Business Economics and financial markets are also incorporated specifically. An interest in current affairs is assumed and students will be encouraged to debate and discuss topical issues. Applicants should note the emphasis on written assessment in this course.

### Specific entry requirements

Grade 5 in Maths + Grade 5 in English Language

## Electronics

### A Level (Eduqas)

Electronics is about using electricity to carry information through a system. This mix of practical 'hands-on' and theory based course breaks systems down into input, process and output sections. There is a practical coursework element worth 20% to be completed in year two, so organisational skills to use study time productively are vital.

Good ability in Maths to rearrange equations is required, as well as manipulating figures using standard form. The course covers analogue and digital systems, as well as a module on programmable ICs. Students are expected to take the A Level exam at the end of two years. This course has some common links with Computer Science and Physics, but can be taken with any combination of subjects.

### Specific entry requirements

Grade 5 in Combined Science +  
Grade 5 in Maths  
OR Grade 5 in two separate sciences +  
Grade 5 in Maths

## English Language and Literature

### A Level (AQA)

This exciting course encourages students to explore the relationship of language and literature through a wide range of literary and non-fictional texts, including transcribed talk. Students will have regular opportunities to use their developing skills as readers and writers in the production of a number of varied writing tasks, including a creative writing element in the second year.

### Specific entry requirements

Grade 4 in English Language + Grade 4 in English Literature

## English Literature

### A Level (AQA)

English Literature, a very popular course, is for those who enjoy books, reading them ambitiously, and thinking, talking and writing about them with energy and a sense of adventure. Students are given opportunities to discover their own responses, to share them with others and to develop and sharpen their literary critical powers.

### Specific entry requirements

Grade 4 in English Language + Grade 4 in English Literature

## Environmental Science

### A Level (AQA)

A wide range of environmental issues are examined all revolving around the relationship between life on earth and a range of interacting systems. This subject has many overlaps in content with Geography, Geology and Biology, and has a scientific approach. Topics are diverse, and include the physical and the living environment, conserving biodiversity, sustainability, energy resources and pollution. The emphasis on learning is with student research and individual study programmes.

### Specific entry requirements

Grade 4 in Combined Science +  
Grade 4 in Maths  
OR Grade 4 in two separate sciences +  
Grade 4 in Maths

## Film Studies

### A Level (Eduqas)

This course allows you to explore a range of historical and contemporary films with a focus on the following six units: Old and New Hollywood (1930 to 1990); American film post 2005; British film since 1995; Global film; Documentary film; Film Movements focussing on experimental film (1960-2000). Eleven feature-length film texts and short film texts will complement your study of the above all of which will be examined (70% of final Grade).

Over your two years of study you will also learn how to analyse and write about film in detail. Coursework (30% of final grade) includes a solo practical component, involving either screenwriting and storyboarding or the creation of a short film. Parents and students should be aware that 18 certificate content will sometimes be studied. A study guide will be available to purchase from the WJEC. Students with an interest in Arts and humanities subjects such as Photography, History, English Literature, Philosophy and Politics would find this course interesting as well as students of Media studies. Students wishing to develop media portfolios for entry into the industry would be advised to combine their study of Film with a BTEC in Media.

### Specific entry requirements

Grade 4 in English Language

## French

### A Level (AQA)

During the course you will study topics and issues on current trends and artistic culture of French-speaking society which interest young people today; for example, cyberspace and contemporary Francophone music, as well as an in-depth analysis of a French film. The course will help develop French communication skills practised at GCSE Level to a higher level over a broader, more adult range of language. You can expect a range of activities in the classroom to practise all language skills and a lesson with the Foreign Language assistant to enhance your speaking skills.



In the second year, you will study topics on current issues and political life of French-speaking society such as how criminals are treated and immigration, as well as a French literacy work.

#### Specific entry requirements

Grade 6 in French + Grade 4 in English Language

## Geography

### A Level (Edexcel)

Geography is a topical subject which is especially attractive for those who want to make sense of the world outside the classroom. Topics such as tectonic hazards, coastal landscapes, globalisation, regeneration, water and energy security, climate change, migration and sovereignty, and superpowers and geopolitics are all covered. It can enhance skills of communication; ICT (including GIS); teamwork and problem solving; as well as develop a greater awareness of the environment and the issues that face our world both now and in the future.

Students will be required to write evaluative essays throughout the course as well as apply statistical techniques to data. Fieldwork is also an invaluable component of the course, and students will undertake four days of compulsory local fieldwork throughout year 1. An optional trip to Iceland in year 2 is also offered.

80% of the A-Level is assessed through terminal exams, and 20% is from a piece of coursework based on each student's own individual investigation; this will involve primary data collection which students must be prepared to undertake during the summer break of the first year.

#### Specific entry requirements

Grade 4 in English Language + Grade 5 in Maths + Grade 4 in Geography (if taken)

## Geology

### A Level (Eduqas)

In the first year, exciting topics include volcanoes, sedimentary and metamorphic rocks, dinosaurs and other fossils, folds and faults, and minerals. There will be two days of local fieldwork. In the second year we carry on with earthquakes, plate tectonics, earth resources, and geological maps and an additional two days of essential fieldwork. Students may have the opportunity to visit volcanoes in Iceland, and our local field trips are an important element.

Students should have an interest in the natural world, especially the physical aspects of the planet. Useful combinations are Geography, Biology, Chemistry and Environmental Science.

#### Specific entry requirements

Grade 5 in Combined Science + Grade 4 in Maths  
OR Grade 5 in two separate sciences + Grade 4 in Maths

## German

### A Level (AQA)

The main aims are to help you communicate confidently, clearly and effectively in German through both the written and spoken word; to develop your understanding of the spoken and written forms of German; to help you develop critical insights into and contact with, the contemporary society, cultural background and heritage of German-speaking countries. Current issues relating to Germany, Austria and Switzerland are part of the course material used to emphasise a good understanding of German culture and life. Students take part in an exchange visit to further develop their language skills and understanding of German culture.

First year activities are based on the following topic areas: Aspects of German speaking society (The changing state of the family, The digital world; Youth culture) and Artistic culture in the German speaking world (Festivals and Traditions; Art & Architecture; Cultural life in Berlin-past and present) and a film in German, "Das Leben der Anderen". Second year activities are based on the following areas:

Multiculturalism in German-speaking society (Immigration; Integration; Racism) and Aspects of political life in the German speaking world (Germany and the European Union; Politics and youth; Re-unification of Germany and its consequences) and a book, "Der Vorleser".

#### Specific entry requirements

Grade 6 in German + Grade 4 in English Language

## Graphic Communication

### A Level (Eduqas)

This course is suited to those students with a serious interest in graphic design where they will explore advertising, illustration, packaging, typography and multimedia. They will investigate design problems, determine relevant sources of information, research and propose solutions recognising the constraints of moral, social, cultural, environmental and legal issues. It should be noted that this is an art based approach to graphic design; where students will develop fluent Photoshop skills as an important part of this course. It also features an integral careers programme, which can include work placement opportunities and live briefs within this subject specific area. The A Level course is 60% coursework project, 40% examination project.

#### Specific entry requirements

Grade 4 in Art and Design

## History

### A Level (Edexcel)

Studying History allows students to gain a deeper understanding of how the past has shaped and continues to shape societies and national and global relationships. From the Collapse of the Soviet Union to the development of British Democracy, students who study with us will be able to better comprehend the causes and consequences of past and current conflicts and political reforms that still resonate today. Our exciting course focuses on modern history but spans continents and centuries, featuring China, Russia, Europe and the UK.



If students are considering a future where research and analytical skills are important, for example in Politics, International Relations, Business, Law, or Media, History should be considered as an option. History combines very well with most other subjects and is very well regarded by university admissions officers and employers. The course provides students with a wide range of learning experiences, including study visits, debate, class discussion, tutorials and presentations, all of which will enable students to become analytical and confident learners.

#### Specific entry requirements

Grade 4 in English Language

## Law

### A Level (OCR)

A-Level Law is a dynamic and living subject. It changes in response to events, developments in technology and serves to reflect contemporary values within society. Students will learn about society from a legal perspective and the interaction between law and morals, justice, and society, including the Rule of Law. Modules include Law Making, English Legal System, Criminal Law, Tort Law, Human Rights and Philosophy of Law.

Students will develop a range of transferable skills: analytical skills, attention to detail, logical thinking, and research skills. As such it is a well-respected qualification and is not only for students who want to enter the legal profession. Students can continue their legal studies opting for a university degree or a work-based apprenticeship. Both routes can lead to qualifications required to become a solicitor, barrister, or legal executive. Other popular careers include the police and the civil service.

A-Level Law is a very demanding course that is assessed by 100% written examinations. As such it is best suited to students who take a very proactive approach to learning and who are sufficiently resilient to manage the challenges of the course. The expectation is that Law students will carry out a minimum of six hours independent study per week.

#### Specific minimum entry requirements

Grade 5 in English Language + Grade 5 in English Literature.

## Mathematics / Further Mathematics

### A Level (Edexcel)

Mathematics is the most fundamental way we make sense of the world. It is the product of our human desire for reason, logic and aesthetic beauty. Mathematics at A-level is about problem solving using logic, analysis and generality. You will explore a wide range of topics such as trigonometry, logarithms, functions, calculus and vectors and see their applications in statistics and mechanics. The use of technology is important and involves analysing and interpreting a large data set and becoming fluent with the use of graphical calculators and graphing software.

Students who love maths and would like to study it in more depth should consider taking our 'Further Mathematics' course. On this course students complete the full Mathematics A-level in Year 1, taught over two blocks and study the Further Mathematics A-level in Year 2, again taught over two blocks. They achieve two A-levels in mathematics at the end of their studies.

A-level Mathematics is a preferred subject for many degree courses, such as Mathematics, Engineering, Computing, Medicine, Chemistry, Physics, Natural Sciences, Economics and Accounting, and is also highly respected by employers. Further mathematics is required for many maths degrees and computing, physics and engineering degrees at the top universities.

#### Specific entry requirements for Mathematics A Level

Grade 6 in Maths + Grade 4 in English Language

#### Specific entry requirements for Further Mathematics A Level

Grade 7 (ideally 8 or 9) in Maths + Grade 4 in English Language

## Media Studies

### A Level (Eduqas)

Media Studies encourages students to think critically about the messages we all receive daily from the mass media. Students need to be prepared to tackle difficult theoretical issues, read up on current media debates, produce high quality practical coursework and write coherent analytical essays.

The work demands an enquiring and rational analysis of the major media issues. Within the coursework, students will undertake practical production producing both moving image and print products. Parents and students should be aware that 18 certificate content will sometimes need to be studied.

#### Specific entry requirements

Grade 4 in English Language

## Music

### A Level (Edexcel)

Students wishing to go on to degree level or simply increase their music skill will enjoy the practical and theoretical aspects of this course safe in the knowledge that Music is a highly regarded academic subject, valued by universities for students wanting to study any subject because of the requirement for a broad skillset which will be developed through the course.

The course is a mixture of coursework (60%) and an Exam (40%). You will receive weekly lessons in the different skills of the course: aural, history, harmony and composition. There will also be coursework performance assessments and it is vital that you are having lessons at least once a fortnight on your main instrument or voice with a suitably qualified teacher. A-level music students at Collyer's will automatically be part of the West Sussex Music Academy which is run in partnership with West Sussex Music. This relationship gives Collyer's Music students access to advanced tuition at a discounted rate.



Within the department there is an excellent and varied extracurricular programme including the following groups: College choir, orchestra, jazz band, coached chamber ensembles along with the opportunity for students to form their own ensembles.

#### Specific entry requirements

Grade 4 in English Language + Grade 5 Instrument + Grade 5 Theory (or equivalent)

## Philosophy

### A Level (AQA)

Philosophy explores a variety of abstract questions such as: how should we live our lives? Does God exist? Are we all just plugged into the Matrix? Do we have a soul? Are people ever really free? How can moral disagreements be rationally settled? The course features an introduction to all the major areas of Philosophy, developing skills of research, evaluation, interpretation and analysis. Students on the course will debate what many have felt to be weighty questions of existence utilising communication, critical reasoning and general problem solving skills.

#### Specific entry requirements

Grade 5 in Maths + Grade 5 in English Language

## Photography

### A Level (Eduqas)

This is a visual, creative and technical subject in which students develop their ability to express ideas through photography. Both traditional and digital technologies may be employed in students' work. Technical aspects of photography as well as aesthetic and critical approaches are developed and demonstrated through sketchbooks and final pieces.

This is both a practical and theoretical subject where the ability to respond visually is essential. This A Level course is 60% coursework project, 40% examination project.

#### Specific entry requirements

Grade 4 in English Language + Grade 4 in a creative subject (A portfolio may cover the creative GCSE requirement, discussion required at interview)

## Physical Education

### A Level (AQA)

Physical Education at A Level shapes a comprehensive base of knowledge in the world of Sports Science whilst providing an enriching experience of PE and sport. The course is an excellent step toward Sports Science related HE courses, careers or apprenticeships. The PE specification focuses on 6 topic areas: applied anatomy and physiology, skill acquisition, sport and society, biomechanical movement, sport psychology, sport and society and the role of technology in physical activity and sport. Students are assessed in one sport only, as either a performer or coach. Students are required to produce video evidence of their sports performance in a fully competitive context. Students must further demonstrate their application of knowledge with written coursework to identify errors and offer strategies aimed at improving their personal sporting performance.

#### Specific entry requirements

Grade 4 in English Language + Grade 5 in at least one out of Science, Maths or PE

## Physics

### A Level (AQA)

Physics is a challenging subject but it is also fun and intellectually rewarding. Students develop skills in problem solving, mathematics, communication and practical experimentation, which makes Physics an excellent foundation for a surprising number of non-scientific courses at University level as well as courses in science and engineering. You will begin by studying the very small starting with particle physics and finish with the very big with astrophysics.

Other topics covered include waves, mechanics, electricity, circular motion and simple harmonic motion, thermal physics, gravitational fields, electromagnetism and nuclear physics. Due to the very mathematical nature of the course it is strongly recommended that students also take Maths A-level.

#### Specific entry requirements

Grade 6 in Combined Science + Grade 6 in Maths

OR Grade 6 in Physics + Grade 6 in another science + Grade 6 in Maths

## Politics

### A Level (Edexcel)

A thorough grounding in British and American politics and political ideas is delivered through lectures, videos, debates, discussions and visits. The beginning of the course focuses on the British political system. We look at the health of our democracy, Parliament and political parties. We always try to visit the Houses of Parliament as part of the first year. We then go on to study American politics at a fascinating time. We explore the role of the president, Congress and the Supreme Court as well as analysing the health of American democracy. Our final topic features analysis and debate on political ideas, from traditional core ideologies such as liberalism, socialism and conservatism to the newer development of feminism. We also visit the Westminster politics conference every year and offer an overseas trip either every year or every other year to Washington DC. The course is an ideal companion to History, Economics, Law and English, but can be studied with any subject.

#### Specific entry requirements

Grade 4 in English Language

## Psychology

### A Level (AQA)

Psychology is the scientific study of the mind and behaviour. It is a demanding subject, which requires students to have an inquisitive, analytical mind and an interest in the biological basis of behaviour. In the first year students discuss the structure and function of the human memory, investigate types of attachment in childhood and the influences of social groups on our behaviour. There is a heavy scientific element in the syllabus where students will learn about biopsychology including the role of genetics, brain dysfunction and biological/non biological explanations for abnormal behaviours such as anxiety disorders and depression.

In the second year students focus on schizophrenia, forensic psychology and cognitive child development. In both years there is a heavy emphasis on students using and understanding the key research methods used by psychologists, which include experiments, self-reports, observations and correlations. Students will be expected to analyse and interpret statistical data and conduct statistical tests.

10% of the overall assessment will contain a mathematical element.

### Specific entry requirements

Grade 4 5 in Combined Science +  
Grade 5 in Maths  
OR Grade 4 5 in two single sciences +  
Grade 5 in Maths + Grade 4 in English Language

## Sociology

### A Level (AQA)

Sociology is concerned with the study of social patterns of behaviour and students will acquire a critical awareness of British society and the forces that shape it. It involves an academic/theoretical approach to the study of society. Sociology is useful for any career that involves working with people or anyone interested in understanding how society works. Topics include, in the first year, Families and Households and Education with Research Methods, while in the second year we look at Crime and Deviance with Theory and Methods as well as Beliefs in Society.

### Specific entry requirements

Grade 4 in English Language

## Spanish

### A Level (AQA)

This course reflects the increasingly communicative nature of language teaching on Advanced Level courses. Current issues relating to Spain and South America are part of the course material used to emphasise the learner's need for a good understanding of Spanish culture and life. Students take part in an exchange visit to further develop their language skills and understanding of Spanish culture

First year activities are based on the following topic areas: Aspects of Hispanic Society: Modern and traditional values, Cyberspace, Equal rights. Artistic culture in the Hispanic world: Modern day idols. Spanish regional identity. Cultural heritage or cultural landscape. Students study a film in Spanish. Second year activities are based on the following areas: Multiculturalism in the Hispanic Society: Immigration, Racism and Integration. Aspects of political life in the Hispanic World: Today's youth, tomorrow's Citizens, Monarchies and Dictatorships, Popular movements. Students also study one book in Spanish.

### Specific entry requirements

Grade 6 in Spanish + Grade 4 in English Language



## Textile Design

### A Level (Eduqas)

This course aims to encourage a professional, rigorous enquiry into fashion and textiles design. The disciplines within this subject will include constructed textiles, dyed, printed textiles, fine art textiles and fashion. It encompasses traditional handcrafts and computer-aided technology. Students are supported and encouraged as independent learners, developing an artistic and personal professionalism towards their studies and possible future careers in design. It features an integral careers programme, which can include work placement opportunities and live briefs within this subject specific area. The A Level course is 60% coursework project, 40% examination project.

### Specific entry requirements

Grade 4 in Art and Design



# Vocational courses

## Applied Science

### BTEC National Level 3 (Pearson)

BTEC Applied Science is a challenging course designed for students who wish to study a broad science course that centres on the practical, applied and investigative elements of science. The course is available as both Single or Double options equivalent to either one or two A Levels.

Students can progress to higher education or apprenticeships and ultimately employment in the applied science sector. Over 95% of universities (including Russell Group) and a wide range of employers highly value BTEC qualifications. A BTEC qualification in Applied Science may lead to many degree level science courses\* including: Psychology, Environmental Sciences, Biological Sciences, Medical professions, Food Science, Communication Industry, Satellite Communications and Materials Science. (\*when combined with appropriate A Level subjects).

Students will study across all three sciences: Biology, Chemistry and Physics covering topics including fundamental chemical and physical principals, structure and function of cells, physiology and disease, astronomy and space science, electromagnetic waves and satellite communication amongst many other fascinating areas of cutting-edge science. Students may wish to combine BTEC Applied Science with other science A Levels including Electronics, Psychology, Geology or Environmental Science.

Single ☒ Double ☒ Triple ☐

### Specific entry requirements

Grade 4 4 in Combined Science +  
Grade 4 in Maths  
OR Grade 4 in two separate sciences  
+ Grade 4 in Maths

## Art and Design

### BTEC National Level 3 (Pearson)

The BTEC National Diploma in Art and Design is equivalent to three A Levels and is intended to be studied as a standalone full-time course over two years. It is ideal for students with a real enthusiasm for art and design who are seeking a career in this growing and exciting industry.

The course covers both practical and vocational skills in art and design and has a rigorous academic focus. Students experience a range of disciplines in the first year, before deciding upon an area they would like to specialise in during the second year. The course is assessed both internally and externally through coursework and assignment, culminating in a final major project that students work on.

Students can specialise in the following areas: Fine Art - Drawing, Printmaking, Painting, and Sculpture, Photography - Studio, Darkroom and Digital, Graphic Communication - Illustration, Typography and Digital Design. Upon successful completion of the course most students' progress on to higher education, having gained the equivalent of three A Levels along with a substantial portfolio of artwork that demonstrates their practical skills in a

specialist subject area. This will assist students with interviews at university or if applying for work in the creative industries.

Single ☐ Double ☐ Triple ☒

### Specific entry requirements

Grade 4 in Art and Design + Grade 4 in English Language (Grade 4 in an alternative creative subject will be considered by Head of Subject at Enrolment)

## Business

### BTEC National Level 3 (Pearson)

The BTEC National Diploma in Business is designed to provide a specialist work related programme of study that covers the knowledge and skills required to progress successfully in the workplace but also provides a firm basis for higher education. The course can be taken as a Single or Double option and is equivalent to one or two A Levels. The core units provide an underpinning knowledge of business as well as basic business skills including a unit that involves developing a marketing campaign. All students will one day work in a business or perhaps own their own. As a result, Business Studies is a relevant course choice for all students. For those students who prefer the more vocational style the Level 3 Diploma is an excellent choice.

Single ☒ Double ☒ Triple ☐

### Specific entry requirements

Grade 4 in Maths + Grade 4 in English Language

## Creative Digital Media Production

### BTEC National Level 3 (Pearson)

The BTEC National in Creative Digital Media Production is designed to provide a specialist work related programme of study that covers the knowledge and skills required to progress successfully in the workplace but also provides a firm basis for higher education. The core units provide an underpinning knowledge of the media as well as core production skills including units on how to research, plan, prepare, budget and create moving image media products. The course also deals with client liaison and commissioning issues so that creative skills are developed with a firm focus on their use in the workplace. The course is the equivalent to one A Level. Students will learn the creative and technical skills to put their ideas into practice. They will also learn the essential business and interpersonal skills to prepare them for further study, training or apprenticeships in this popular and competitive field. For those students who prefer a more vocational style of learning then this course will would be an excellent choice.

Single ☒ Double ☐ Triple ☐

#### Specific entry requirements

Grade 4 in English Language

## Criminology

### Advanced Diploma (Eduqas)

This Level 3 Applied Diploma course is ideal for anyone wishing to improve their knowledge of crime, its impact on society, and the ways in which justice is administered. It will suit individuals with a keen interest in crime and criminal behaviour or those with aspirations of working within the Police Force, legal profession or forensics.

The course is comprised of four units. Changing Awareness of Crime explores different types of crime, how perceptions of crime can be influenced and why crimes are unreported.

Criminological Theories allows learners to obtain an understanding as to why people commit crime. Crime Scene to Courtroom explores the criminal justice system from the moment the crime is identified through to the verdict. Students will develop understanding and skills needed to examine information in order to review the justice of verdicts from criminal cases. Crime and Punishment permits students to apply their understanding of awareness of criminality, criminological theories and the process of bringing an accused to court in order to evaluate the effectiveness of social control.

The qualification would support learners progressing from level 2, specifically GCSE's in Sociology, Law, Psychology, Citizenship, History or Humanities.

Single ☒ Double ☐ Triple ☐

#### Specific entry requirements

Grade 4 in English Language + Grade 4 in English Literature

## Engineering

### BTEC National Level 3 (Pearson)

This BTEC Extended Certificate is a single option and is the equivalent of one A level. It is designed to support progression into a range of engineering careers by way of either employment, apprenticeship or higher education degree course. Students will study a mixture of engineering concepts involving Maths, Physics, Mechanics, Electronics, Product Design, and Health & Safety. Assessment is through a combination of a written exam and a time-limited controlled assignment (67%), and coursework assignments (33%).

The course is delivered via a range of practical activities and theory based sessions with an emphasis on the application of engineering principles to the real world. Students produce written reports and make presentations, analyse how real circuitry compares to computer simulations, use CAD to produce drawings and design improvements in case studies.

The course develops skills in understanding and problem-solving, as well as intra-personal skills (teamwork, communication, negotiating and self-presentation) and inter-personal skills (resilience and adaptability, self-management, self-monitoring and development).

#### Specific entry requirements

Grade 4 4 in Combined Science + Grade 5 in Maths + Grade 4 in DT (if taken)

OR Grade 4 in two separate sciences + Grade 5 in Maths + Grade 4 in DT (if taken)

Single ☒ Double ☐ Triple ☐

## Health and Social Care

### BTEC National Level 3 (Pearson)

This BTEC Diploma course can be taken as a single or double option and is equivalent to one or two A Levels. It looks into all areas of health and social care in the UK, covering topics as diverse as legislation, health promotion, nutrition, human biology, mental health and the care of different population groups. Suitable for students who may want to progress onto university to become nurses, midwives, teachers, social workers and a range of other roles in the NHS, as well as complementary therapists, specialists in additional needs care, or those hoping to progress directly into the workplace to work in any of these roles.

Applicants should plan to undertake volunteering during the summer before starting.

Single ☒ Double ☒ Triple ☐

#### Specific entry requirements

Grade 4 in Maths + Grade 4 in English Language



## Information Technology

### BTEC National Level 3 (Pearson)

This BTEC Extended Certificate can be taken as a single option and is equivalent to one A Level.

This qualification is suitable for anyone who really enjoys using computers and would like to develop their skills for a possible career in IT, to prepare for further study, training, or apprenticeships in this popular and competitive field.

For those students who prefer a more vocational style of learning then this course will be an excellent choice.

This single qualification carries UCAS tariff points equivalent of 1 GCE A Level.

The course has been recently updated and has been developed to enable learners to build the technical skills and knowledge needed to work in the computer industry or to enable progression to higher education degree courses in Information Technology and related areas such as Digital Technology Solutions, IT Management for Business, Computer Networks and Security or Creative Computing.

Single ☒ Double ☐ Triple ☐

#### Specific entry requirements

Grade 4 in Maths + Grade 4 in English Language

## Music Practitioners

### Subsidiary Diploma (RSL)

This course is ideally suited to students with an interest in music production techniques, technologies and live music. It involves sequencing, live and studio recording, listening, analysing and basic pop harmony. Students can then choose to specialise one unit in either performance, if they sing and/ or play an instrument, OR live sound engineering.

Qualities required are the intention to increase their current music or technical abilities (whatever level that may be), improve on these skills outside of lessons and engage in regular teamwork with a strong personal

creative motivation. The course is available as a single option and is equivalent to one A Level.

Single ☒ Double ☐ Triple ☐

#### Specific entry requirements

Grade 4 in English Language

## Sport

### BTEC National Level 3 (Pearson)

This BTEC Diploma course can be taken as a single or double option and each option is equivalent to one or two A Levels. The courses are assessed through coursework, practical demonstrations and external assessment. The content is very diverse, topics range from anatomy and fitness training, to sports development and nutrition. A range of teaching methods will be used, including theory based lessons, practical sport, workshops and seminar based lessons. Although we encourage all students to be participating in sport, they do not get assessed as a performer in their sport. The course is designed to provide an introduction to the sector for learners looking to build a career in sport or wishing to access the range of sports related degree courses now available in universities.

It is not possible to study both BTEC Level 3 Sport and A Level Physical Education.

Single ☒ Double ☒ Triple ☐

#### Specific entry requirements

Grade 4 in English Language + Grade 4 in either Maths or a science

## Travel and Tourism

### BTEC National Level 3 (Pearson)

This new and updated BTEC course can be taken as a single option, equivalent to one A Level, or a double option equivalent to two A levels. The course is designed to provide students with a firm basis for progression into higher education where popular degrees include International Tourism Management or Sustainable Tourism Management. It also gives students the knowledge and transferable skills required to enter the workplace after completing their course.

The core units focus on how the travel industry operates as a business, how different areas interrelate and how tourism is marketed across the world. We will also look at different destinations and their importance by investigating their features and developing the skills needed to examine, interpret and analyse a variety of statistics that measure the importance of tourism.

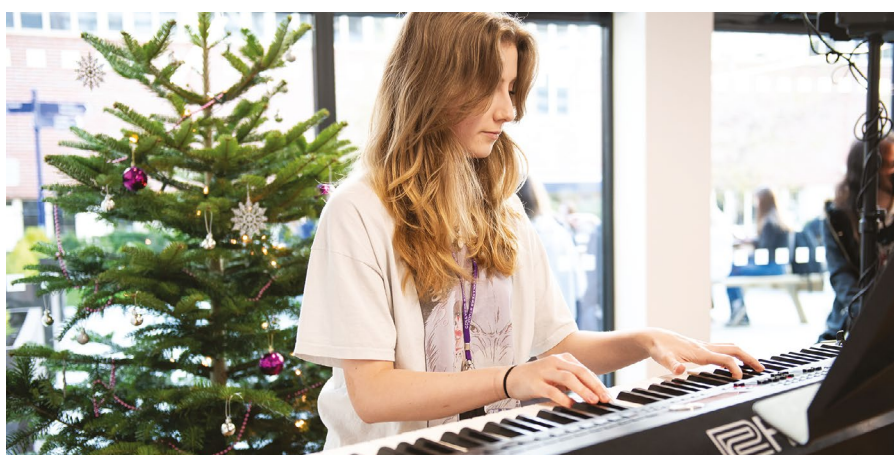
There are units on customer service where we explore and apply ways of managing the internal and external customer experience to support organisational success and to develop customer service skills.

The assessment is a combination of work-related assignments set and marked internally by the college, external tasks which will include practical, work-related activities, set and marked by the exam board and written externally set exams.

Single ☒ Double ☒ Triple ☐

#### Specific entry requirements

Grade 4 in English Language





# Technical courses

## Digital Production, Design and Development

### T Level (Pearson)

The Digital T Level is a new full time level 3 technical course, equivalent to three A Levels. Leading digital employers have helped to develop the qualification to equip young people with the skills that the industry needs. A key feature of the course is a mandatory industry placement of at least 45 days.

As well as the **industry placement**, T Level study programmes comprise a 'core' set of underpinning **knowledge, concepts and skills**, tailored for their chosen industry, and **occupation and specialist training** covering occupational or industry-specific skills.

Digital Production, Design and Development is suitable for students who plan a career in software development and will develop the following specialist skills:

- Analyse a problem to define requirements and acceptance criteria aligned to user needs
- Design, implement and test software
- Change, maintain and support software
- Create solutions in a social and collaborative environment

- Discover, evaluate and apply reliable sources of knowledge
- Apply ethical principles and manage risks in line with legal and regulatory requirements when developing software

Most T Level students will progress, from college, straight to work or onto a higher level or degree apprenticeship. However, the qualification does accrue UCAS points and will allow progression to university.

Single ☐ Double ☐ Triple ☒

### Specific entry requirements

Grade 4 in English Language + Grade 4 in Maths

Students will gain a 'core' set of underpinning knowledge, concepts and skills relevant to education and care from birth to nineteen years of age. They will also study 'occupational specialist' content related to early years from birth to 5 years.

A mandatory 750 hrs in industry training is needed to achieve the qualification. This will be undertaken two days a week in a range of settings, provided by the college, working with children aged six months to five years. Students will develop vocational competency to engage children, work with others to plan and lead activities to meet children's needs.

Single ☐ Double ☐ Triple ☒

### Specific entry requirements

Grade 4 in English Language + Grade 4 in Maths (Students must obtain a full and valid DBS on enrolment)

## Early Years Education and Childcare

### T Level (NCFE CACHE)

The Education and Childcare T Level is a full-time level 3 technical course. The course provides UCAS points to the value of 3 A Levels and gives an excellent direct progression route to further study in higher education or degree level apprenticeship. Written with the involvement of early years sector employers, it also leads to licence to practice as an Early Years Educator (E.Y.E.) successfully giving students the skills & qualification & experience required for employment in as a Level 3 practitioner in a range of settings.



# Transition courses

## Art and Design

### **BTEC First Level 2 (Pearson)**

This one year, Level 2 course would suit students wishing to add a vocational art and design based course to their options. You will develop technical abilities in art and design and learn about the entire creative process, from initial brief to end product. The course also explores development skills and creative challenges through research and drawing. You will explore exciting assignments and build a portfolio of work through 2D and 3D, Printmaking, Painting, Graphic Image Making, Craft design, and externally set exam projects. Students must already have an interest in art and design.

#### **Specific entry requirements**

Average GCSE Grade of 3

## Biology

### **GCSE (AQA)**

The course covers a range of human biology, general animal and plant, and is examined in two exams at the end of the year. The first exam covers: cell biology; organisation; infection and response; and bioenergetics. The second exam covers: homeostasis and response; inheritance, variation and evolution; and ecology. The course also includes a range of required practical techniques using scientific equipment that are examined in the written exams. This course will suit students with an interest in living things and is suitable mainly for students who are interested in

progression into sports, teaching or science courses.

#### **Specific entry requirements**

Grade 3 or below in science GCSEs

## Business

### **BTEC First Level 2 (Pearson)**

This one year Level 2 course offers the opportunity to develop skills, knowledge and understanding related to the world of business, as a preparation for employment, or progression to Advanced Level Business and further education. The areas covered range from business administration, financial planning, the roles of people within organisations, development of online activities and the key pressures businesses face. Students will be predominately assessed via coursework and two exams covering Finance and Marketing.

#### **Specific entry requirements**

Average GCSE Grade of 3

## Child Development and Care

### **Technical Award Level 2 (NCFE CACHE)**

This one year course, has been designed to provide students with the opportunity to gain a vocational qualification providing a basic introduction to the early years sector. It includes a knowledge and understanding of child development

and well-being 0-5 years, how to observe a child, plan activities and routines, develop a child's independence and support their learning. Students who study this course can gain the understanding and skills needed to prepare for employment in the early years sector or to progress to the Level 3 T Level. They may be aiming to become early years educators, teachers, nurses, midwives, social workers, and many other roles in additional education and care. Assessment is 50 % coursework and 50% External examination.

#### **Specific entry requirements**

Average GCSE Grade of 3

## English

### **GCSE (AQA)**

All students who have not achieved a Grade 4 or above in GCSE English Language will need to enrol on this course. You will join a friendly and supportive team who have the reputation of delivering outstanding results. Assessment will involve analysing a variety of literary and non-fiction texts in preparation for two exams: Paper 1: Explorations in Creative Reading and Writing, and Paper 2: Writers' Viewpoints and Perspectives. If you have previously followed the AQA GCSE English Language syllabus (first examined in June 2017) there may be an opportunity to retake in November.

#### **Specific entry requirements**

Grade 3 or below in English Language



## Health and Social Care

### BTEC First Level 2 (Pearson)

This new award looks into all areas of health and social sector in the UK, covering topics as diverse as legislation, health promotion, nutrition, human biology, mental health and care of different population groups. Suitable for students who may want to progress directly into the workplace or go onto the Level 3 award to enable access to university. Students who study this award will probably be aiming to become carers, nurses, midwives, teachers, social workers, and many other roles in the NHS, as well as complimentary therapists and specialists in additional needs care.

#### Specific entry requirements

Average GCSE Grade of 3

## Information Technology

### BTEC First Level 2 (Pearson)

This one year course, has been designed to provide students with an introduction to how information systems work and how to use software applications to meet realistic user needs. Students will learn a range of practical ICT skills, for example; The Online World; Website Development and create Digital Portfolio.

BTEC Firsts provide work-related qualifications, giving learners the knowledge, understanding and

skills that they need to prepare for employment or to progress to a Level 3 programme. Assessment is 75% coursework and 25% External examination.

#### Specific entry requirements

Average GCSE Grade of 3

## Mathematics

### GCSE (AQA)

A level 4, or above, at GCSE is an important qualification for many jobs, apprenticeships and higher education courses. This retake course will follow the Foundation syllabus, which covers Grades 1 to 5, and its aim is to give students the opportunity to improve their Maths Grade. Students who find maths particularly challenging may be given the option to study a course focusing on the real-life areas of mathematics which will result in an equivalent qualification.

#### Specific entry requirements

Grade 3 or below in Maths

## Sport

### BTEC First Level 2 (Pearson)

This is a one year course in which students learn by completing projects and assignments that are based on realistic workplace situations and activities.

This could be from leading sports activities within groups, planning personal exercise programmes or analysing an athlete's sporting

performance. The course is ideal for those students who are looking to gain a sports and leisure related qualification, enabling them to progress into the industry or onto our sports related advanced courses. Students who show particular interest and who achieve an overall Merit or Distinction Grade on the course will be eligible to apply for a place on an Advanced Level 3 course, either A Level or BTEC National Diploma.

#### Specific entry requirements

Average GCSE Grade of 3

## Travel and Tourism

### Level 2 Certificate (NCFE)

This Level 2 vocational course provides an excellent background for students who are looking to progress to a level 3 qualification or may already be considering a career in Travel and Tourism. It involves personal research, investigation into real life travel and tourism activities and educational visits. You will learn essential skills such as business awareness, customer service and understanding destinations in the UK and worldwide. This course can be combined with GCSE subjects and other Level 2 courses. Within the NCFE Level 2 Travel and Tourism course you will study units including; The UK Travel and Tourism Industry which covers the main types of tourism in the UK, the contribution that travel and tourism makes to the UK economy and the different component industries that make up the UK travel and tourism sector; Customer Service in Travel & Tourism where you will learn customer service skills and techniques and look at how organisations need to provide a high level of customer service and the impacts this has to the organisation. You will study a unit called 'Know about airports and airlines where we look at how airports and airlines operate from arrival to departure, how they manage incidents and then jobs roles within the industry. This leads onto the work experience unit where you get to put your new skills into practice.

#### Specific entry requirements

Average GCSE Grade of 3





Studying Music  
Practitioners, Criminology,  
Sociology

"I like the  
independence of  
being at college  
and having more  
control over my own  
studies."

Tristan



# How to apply

We welcome applications from students from across the UK and overseas.

**Applying to Collyer's is a straightforward process:**

## **Step 1: Attend an Open Evening**

Wednesday 8th and Thursday 9th November 2023. Visit the College and talk to staff and students. Details will be published online closer to the event.

## **Step 2: Complete an Online Application**

Students at a partner school should submit their online application no later than 31st December 2023. Collyer's partner schools are Bohunt Horsham, The Forest School, The Gatwick School, Millais School, Oathall Community College, St Oscar Romero Catholic School, Tanbridge House School, and Warden Park Secondary Academy. Students at a partner school will be guaranteed a place at Collyer's, so long as minimum requirements are met.

Students attending any other school should submit their online application no later than 31st January 2024.

We will accept late applications on an individual basis, subject to availability at the time of application.

You can apply online at [www.collyers.ac.uk](http://www.collyers.ac.uk)

## **Step 3: Attend an Interview**

At interview, academic staff will give you advice on appropriate subjects and academic level.

Students at a partner school will be interviewed at their school in February/March 2024. Collyer's will send an invitation to you via email.

All other students will be invited to interview at Collyer's on Tuesday 6th or Wednesday 7th February 2024. The College will send an invitation to you via email.

Successful applicants will receive a provisional offer at the end of their interview (subject to final GCSE grades).

## **Step 4: Attend a Welcome Day**

All successful applicants will be invited to attend a Welcome Day on either Monday 1st July or Tuesday 2nd July 2024.

Students will be able to learn more about different subject areas through taster sessions, meet an enrolment advisor, make changes to their course choices, and be given details of the arrangements for the start of term.

The full Admissions Policy is available via the college website, [www.collyers.ac.uk](http://www.collyers.ac.uk)



## Adult Education

Collyer's also offers a wide range of Adult Education Courses. For details please contact the Adult Education Department on 01403 216597 or visit the college website, [www.collyers.ac.uk](http://www.collyers.ac.uk)

## Overseas Students

We welcome applications from overseas students for full-time study. You may wish to contact the admissions team as a first port of call to help determine whether you will be regarded as a domestic or an international student. Please contact [admissions@collyers.ac.uk](mailto:admissions@collyers.ac.uk)

## Financial Assistance and Travel Information

The Collyer's 16-19 Bursary is designed to support students who face financial barriers to participation in education, such as the cost of books, college equipment or travel. Full details on the bursary and also our Student Travel Award (to assist students who live more than 15 miles from the college) can be found in the Student Finance section of our website under Admissions.



### KEY DATES FOR YOUR DIARY

08/11/2023 or 09/11/2023 – Collyer's Open Evenings

31/12/2023 – Application Deadline for partner school students\*

31/01/2024 – Application Deadline for non-partner school students

06/02/2024 or 07/02/2024 - Interview Day for all non-partner school students

01/07/2024 or 02/07/2024 – Welcome Day (compulsory attendance)

\*Partner Schools = Bohunt Horsham, The Forest School, The Gatwick School, Millais School, Oathall Community College, St Oscar Romero Catholic School, Tanbridge House School, and Warden Park Secondary Academy

### FAQ's

#### Q. Are there any bus services that run to Collyer's?

A. Yes, a large number of our students travel from outside of the Horsham area and several buses stop outside of the College, including those from Haywards Heath and Worthing. A comprehensive overview of available bus routes can be found in the Transport Routes section of our website.

#### Q. Is it easy to get to Collyer's via train?

A. Yes, Horsham is easily reached by train from a wide number of locations including Haywards Heath, Redhill and Chichester. The train station is located at the top of Hurst Road, a 5 minute walk from the College.

#### Q. What is a typical timetable at Collyer's?

A. Standard teaching hours are 8:40am to 4:15pm, although students will find that the library is normally open until 6:00pm. All classes will take place within these standard hours and, where free periods take place, students are expected to make good use of the library.



# Preparing for life after Collyer's

As Sixth Form specialists, we have a great deal of expertise in supporting students to prepare for the future. Our Progression Programme is designed to help you develop the skills, knowledge, experience and confidence that you need, to be successful at college and beyond.

Progression information, advice and guidance are delivered through the tutorial programme, subject enrichment and a range of specialist events and activities, to ensure holistic support for the diverse career ambitions of all our students:

- 1-1 advice and guidance on progress, goals and future direction.
- Access to Unifrog – a complete destinations platform to support research, decision-making, applications and preparation for university, apprenticeships, and jobs.
- Dedicated Careers, Higher Education, and Oxbridge SharePoint sites housing all the information students need to plan their future steps.

- Progression information events and an online platform of resources for students and parents, supporting UCAS and apprenticeship applications.
- Subject-related careers fairs and enrichment opportunities such as residential visits, guest speakers, workshops with professionals, academics and business leaders.
- A programme of Higher Education enrichment throughout the year including visits from university representatives, visits to UCAS events and mock interviews.
- Apprenticeship events, mock interviews and assessment centres.
- A Work Experience Week for first year students during their summer term.
- A dedicated Oxbridge Programme for students aspiring to study at Oxford or Cambridge.
- A dedicated Work Experience Coordinator supporting opportunities to access in-person and virtual work experience.
- Bespoke Higher Education and Careers support in the Library.
- Next Steps Careers events for students and parents with representatives from major employers, apprenticeship providers and college leavers who themselves elected to go directly into employment or workplace training.
- Young Enterprise Scheme and the Challenge of Management Event each year, to support the development of employability skills and recruitment preparation through challenges alongside business experts.
- Support for CV writing and Employability Skills development.
- Work-related learning for Transition students.
- A bespoke Employability course (optional for second year students).







# Degree outcomes after Collyer's

Collyer's students' degree outcomes from all Higher Education Institutions:

Provider	First	First Class and upper second class honours
Collyer's	37.9%	89.6%
Sixth Form sector	32.3%	80.5%
State sector	31.6%	79.9%
Independent sector	36.9%	88.6%

The most recent statistics published by the Higher Education Statistics Agency (HESA) at the time of printing show that 89.6% of Collyer's students who completed a degree achieved a 1st or a 2:1.

Collyer's students have proven that, at university, they perform significantly better than the average for the rest of the sixth form college sector and the wider state sector.

HESA statistics also show that 37.9% of our students achieved a 1st class degree, placing them ahead of graduates from all other sectors. With proven results, a huge variety of subject choices, excellent pastoral guidance, a wide range of sporting and extracurricular opportunities and top-class facilities, we believe potential students should feel confident in choosing Collyer's as their pathway to an excellent future.



Hurst Road, Horsham, West Sussex, RH12 2EJ

**Tel:** 01403 210822

**Email:** [admissions@collyers.ac.uk](mailto:admissions@collyers.ac.uk)

**[www.collyers.ac.uk](http://www.collyers.ac.uk)**

